

Test Report No. F990601/LF-CTSAYAU09-00314C

Issued Date: January 22, 2009

Page 1 of 4

To: MANHO ROPE & WIRE LTD.
41,
Seongsan-dong,
Changwon,
KYOUNGNAM
KOREA

韓子

The following merchandise was submitted and identified by the client as :

Product Name : High Carbon Steel Wire MH

SGS File No. : AYAU09-00314C

Received Date : January 19, 2009

Test Performing Date : January 20, 2009

Test Performed : SGS Testing Korea tested the sample(s) selected by applicant with following results

Test Results : For further details, please refer to following page(s)

SGS Testing Korea Co. Ltd. / Gimhae Laboratory

Sharpless Park
Annie Lim
Helen Yeo /Testing Person

Thomas Hwang / Gimhae Lab. Mgr

This document is bound to the Client's order in General Conditions of Service printed together with protocol on request and accessible at <http://www.sgs.com>. Attention is drawn to the importance of testing, measurement and calibration under defined conditions. Any order of this document is subject to the information contained therein unless the Company's findings at the time of its intervention only and while the area of activity mentioned in this document is the responsibility of the Client and the laboratory. Data and certificates issued are accurate within a transaction done according to their rights and obligations under the transaction documents. Any unauthorised alteration, falsification or falsification of the content or signature of this document is considered and offenders may be prosecuted to the fullest extent of the law. Where alterations stated the results shown in this document may be unreliable. The document is not to be reproduced without the prior approval of the Company.



Test Report No. F690501/LF-CTSAYAU09-00314C

Issued Date: January 22, 2009

Page 2 of 4

Sample No. : AYAU09-00314C.001
Sample Description : High Carbon Steel Wire
Item No./Part No. : N/A
Comments : Material is High Carbon Steel

Test Items	Unit	Test Method	MDL	Results
Cadmium (Cd)	mg/kg	With reference to IEC 62321:2008, ICP-OES	1	N.D.
Lead (Pb)	mg/kg	With reference to IEC 62321:2008, ICP-OES	5	N.D.
Mercury (Hg)	mg/kg	With reference to IEC 62321:2008, ICP-OES	2	N.D.
Hexavalent Chromium (Cr VI) By boiling water extraction	**	With reference to IEC 62321:2008	-	Negative

Test Items	Unit	Test Method	MDL	Results
Monobromobiphenyl	mg/kg	With reference to IEC 62321:2008, GC-MS	5	N.D.
Dibromobiphenyl	mg/kg	With reference to IEC 62321:2008, GC-MS	5	N.D.
Tribromobiphenyl	mg/kg	With reference to IEC 62321:2008, GC-MS	5	N.D.
Tetrabromobiphenyl	mg/kg	With reference to IEC 62321:2008, GC-MS	5	N.D.
Pentabromobiphenyl	mg/kg	With reference to IEC 62321:2008, GC-MS	5	N.D.
Hexabromobiphenyl	mg/kg	With reference to IEC 62321:2008, GC-MS	5	N.D.
Heptabromobiphenyl	mg/kg	With reference to IEC 62321:2008, GC-MS	5	N.D.
Octabromobiphenyl	mg/kg	With reference to IEC 62321:2008, GC-MS	5	N.D.
Nonabromobiphenyl	mg/kg	With reference to IEC 62321:2008, GC-MS	5	N.D.
Decabromobiphenyl	mg/kg	With reference to IEC 62321:2008, GC-MS	5	N.D.
Monobromodiphenyl ether	mg/kg	With reference to IEC 62321:2008, GC-MS	5	N.D.
Dibromodiphenyl ether	mg/kg	With reference to IEC 62321:2008, GC-MS	5	N.D.
Tribromodiphenyl ether	mg/kg	With reference to IEC 62321:2008, GC-MS	5	N.D.
Tetrabromodiphenyl ether	mg/kg	With reference to IEC 62321:2008, GC-MS	5	N.D.
Pentabromodiphenyl ether	mg/kg	With reference to IEC 62321:2008, GC-MS	5	N.D.
Hexabromodiphenyl ether	mg/kg	With reference to IEC 62321:2008, GC-MS	5	N.D.
Heptabromodiphenyl ether	mg/kg	With reference to IEC 62321:2008, GC-MS	5	N.D.
Octabromodiphenyl ether	mg/kg	With reference to IEC 62321:2008, GC-MS	5	N.D.
Nonabromodiphenyl ether	mg/kg	With reference to IEC 62321:2008, GC-MS	5	N.D.

- NOTE:**
- (1) N.D. = Not detected (<MDL)
 - (2) mg/kg = ppm
 - (3) MDL = Method Detection Limit
 - (4) - = No regulation
 - (5) ** = Qualitative analysis (No Unit)
 - (6) Negative = Undetectable / Positive = Detectable

This document is issued by the Company under the General Conditions of Service which control or restrict its use and availability of this document. It is the property of the Company and its use is limited to the purpose for which it was issued. It is not to be used for any other purpose without the prior written consent of the Company. The Company is not responsible for any loss or damage to any property or information contained herein or for any consequences arising from the use of this document. The Company is not responsible for any loss or damage to any property or information contained herein or for any consequences arising from the use of this document. The Company is not responsible for any loss or damage to any property or information contained herein or for any consequences arising from the use of this document. The Company is not responsible for any loss or damage to any property or information contained herein or for any consequences arising from the use of this document.

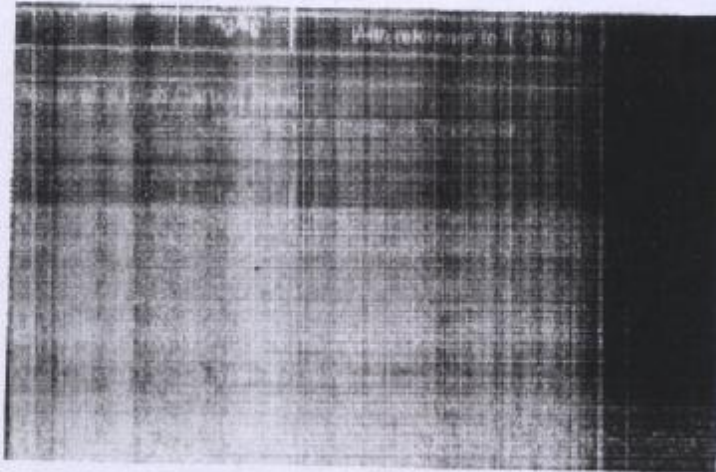
SGS**Test Report No.** F690501/LF-CTSAYAU09-00314C

Issued Date: January 22, 2009 Page 3 of 4

Sample No. : AYAU09-00314C.001
Sample Description : High Carbon Steel Wire
Item No./Part No. : N/A
Comments : Material is High Carbon Steel

Test Items	Unit	Test Method	MDL	Results
Decabromodiphenyl ether	mg/kg	With reference to IEC 62321:2008, GC-MS	5	N.D.

Picture of Sample as Received:



- NOTE:**
- (1) N.D. = Not detected (<MDL)
 - (2) mg/kg = ppm
 - (3) MDL = Method Detection Limit
 - (4) - = No regulation
 - (5) ** = Qualitative analysis (No Unit)
 - (6) Negative = Undetectable / Positive = Detectable

This document is issued by the Company under its internal control system and is subject to internal review and control. Attention is drawn to the fact that the information and data contained herein are for internal use only and are not to be distributed outside the Company. The Company's sole responsibility is to the client and the client's sole responsibility is to the relevant authority. The Company is not responsible for any damage or loss caused by the use of the information contained herein. The results of the analysis are for information only and are not to be used for any other purpose. The results of the analysis are for information only and are not to be used for any other purpose. The results of the analysis are for information only and are not to be used for any other purpose.

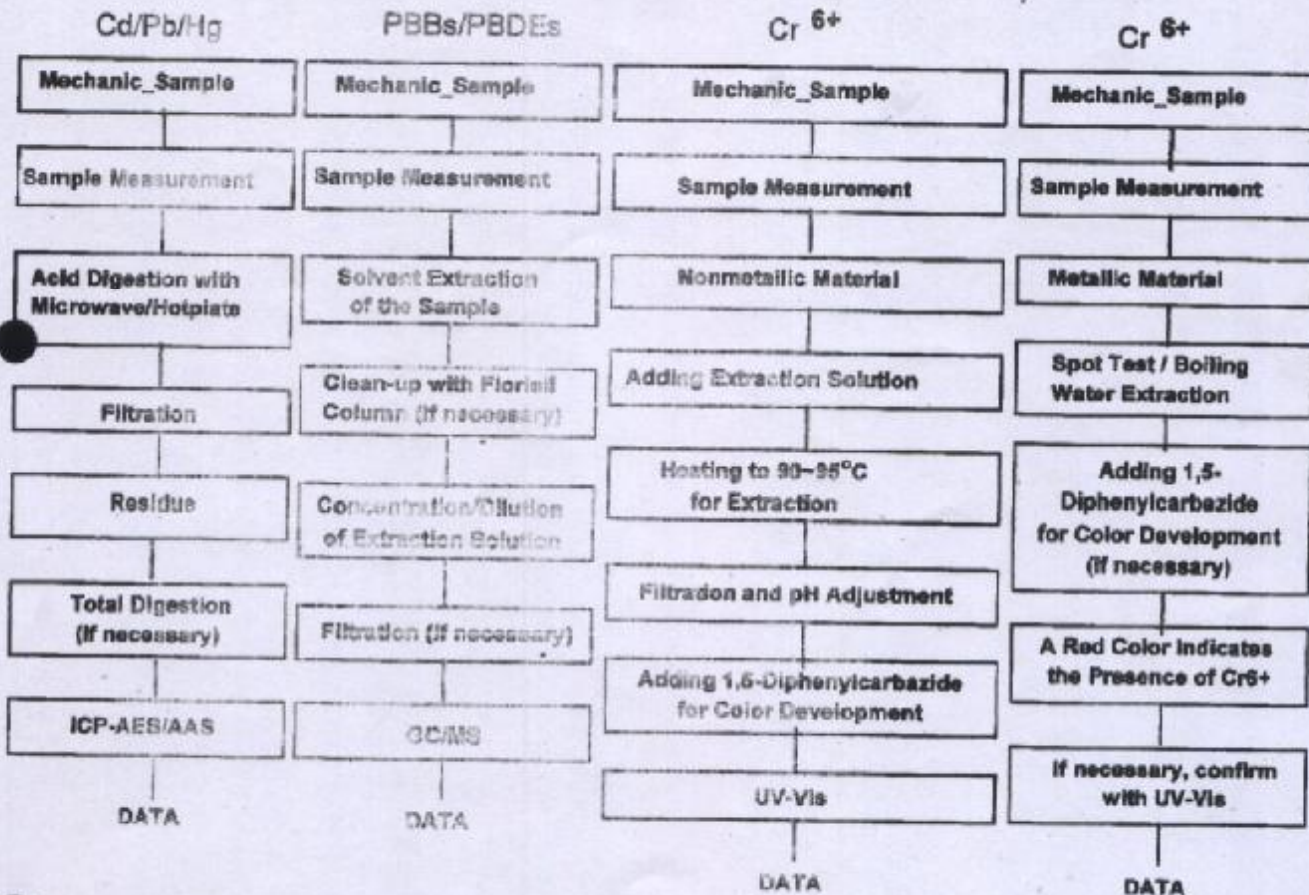


Test Report No. F890501/LF-GTSAYAU09-003140

Issued Date: January 22, 2009

Page 4 of 4

Testing Flow Chart for RoHS: Cd/Pb/Hg/Cr⁶⁺/PBBs&PBDEs Testing



Operator : Sharpless Park
 Lab Manager : Thomas Hwang

*** End ***

- NOTE:
- (1) N.D. = Not detected (<MDL)
 - (2) mg/kg = ppm
 - (3) MDL = Method Detection Limit
 - (4) - = No regulation
 - (5) * = Qualitative analysis (No Unit)
 - (6) Negative = Undetectable / Positive = Detectable

This document is issued by SGS Group under its General Conditions of Service printed on request or available at www.sgs.com and www.sgs.com.sg. Attention is drawn to the limitation of liability, indemnification and jurisdiction clauses printed therein. Any holder of this document is advised that information contained herein reflects the data of the laboratory only and unless the holder of this document, or any other party, has accepted responsibility to the Client and that acceptance does not constitute a warranty from SGS Group or its subsidiaries, agents or affiliates. Any report referred to in this document is subject to the disclaimer in separate and abstracts may be processed to the fullest extent of the law. Unless otherwise stated the results shown in this report refer only to the sample(s) tested. This document cannot be reproduced in any form without prior approval of the Company.